

Timetable

3 Rosa Parks

Term 2

	8.45 – 9.00	9.00 – 10.00			10.15 – 11.00	11.00 – 12.00	12.45 – 1.00	1.00 – 1.15	1.15 – 2.00	2.00 – 3.00	3.00 – 3.10
Monday	MMS	Handwriting	Spelling	Guided Reading	Maths	Literacy	Maths	Assembly	Science	French	Story
Tuesday	MMS	Handwriting	Spelling	Guided Reading	Maths	Literacy	Maths	Assembly	Topic	Topic	Story
Wednesday	MMS	Handwriting	Spelling	Guided Reading	Maths	Literacy	Maths	Assembly	R.E.	Topic	Story
Thursday	MMS	Handwriting	Spelling	Guided Reading	Maths	Literacy	Maths	Assembly	Topic	P.E.	Story
Friday	MMS	Handwriting	Spelling	Guided Reading	Maths	Literacy	Maths	Assembly	Enrichment	PSHE	



# Antarctic Explorers

Year 3 Term 2

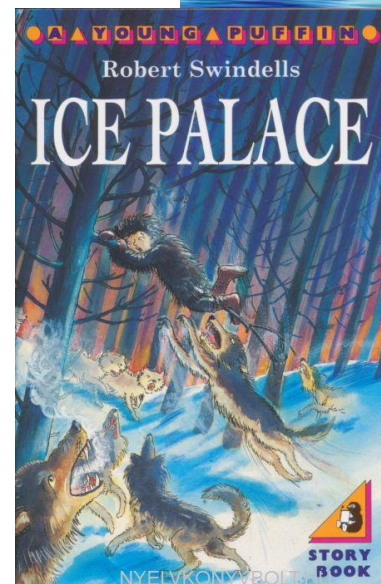
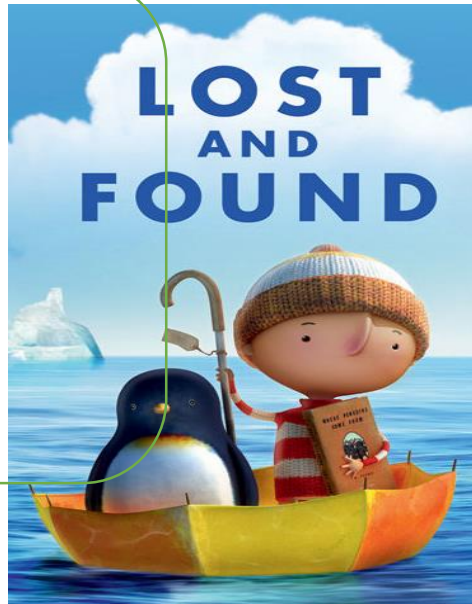
Please join us  
on  
**Wednesday 13<sup>th</sup> of December**  
at  
**2.30pm.**

to see our Lost and Found art work and  
hear our accompanying musical motifs.



## Topic overview.

This term our topic is 'Antarctic Explorers'. We will be looking at the location of Antarctica on the globe and how it differs from the Arctic. We'll look at weather, wildlife and some of the explorers who ventured there during the 19<sup>th</sup> century. Our literacy texts; 'Lost and Found' and 'Ice Palace' are linked to these extreme locations. In Science, we will touch on animal habitats and adaptations at places with severe climates, such as the poles.



## **The Hanwell Pledge.**

*What is being covered?*

Cultural Visit or trip outside Banbury.

Present to an audience. ✓

Read a book each term. ✓

Meet someone inspirational.

Represent the school to visitors.

Take part in an extended project or charity work. ✓

Homework will be sent out on Thursdays, to be done by the following Wednesday please. Home-school readers will be updated whenever they are returned. Please read with your child at least four times a week. We will have library time on Tuesday afternoons (Darwin) and Wednesday afternoons (Rosa Parks) but books can be changed during lunch hour.

## Subject coverage:

Literacy	Knowing the features of and writing play scripts from familiar stories; Lost and Found by Oliver Jeffers and Ice Palace by Robert Swindells.
Maths	Addition and subtraction problem solving, formal multiplication, times tables.
Science	Animals, including humans.
Topic and Art	Geography and climate of Antarctica, explorers Scott, Shackleton and Amundsen. Use of different materials to create Lost and Found illustrations.
R.E.	Ways of describing God, Christmas
P.E.	Gymnastics
Music	Creating musical motifs to accompany different characters in Lost and Found.
PSHE	Self-esteem and respect for all.